

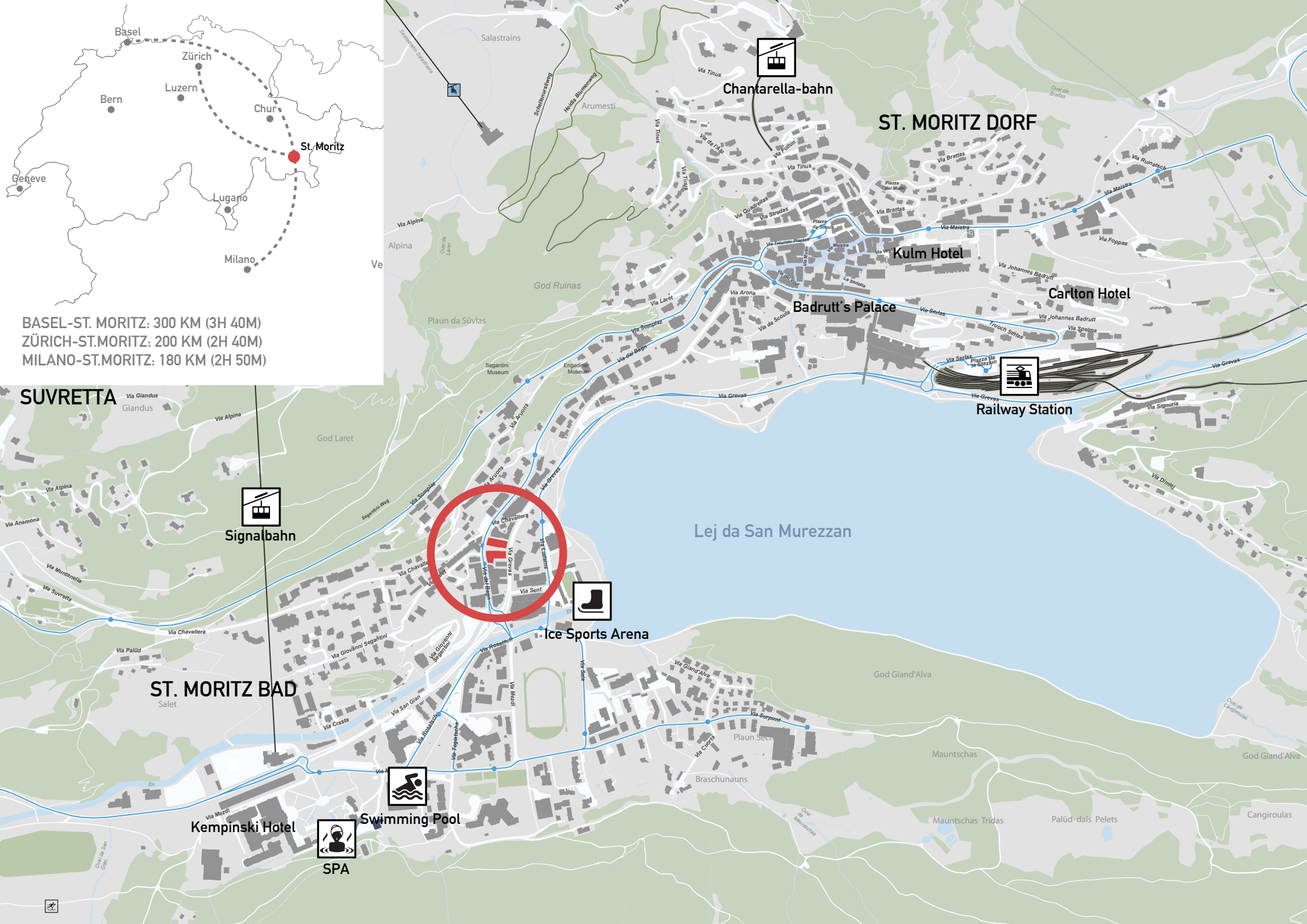
**Project Engiadina** St. Moritz







BASEL-ST. MORITZ: 300 KM (3H 40M)  
ZÜRICH-ST. MORITZ: 200 KM (2H 40M)  
MILANO-ST. MORITZ: 180 KM (2H 50M)



### SUVRETTA

### ST. MORITZ BAD

### ST. MORITZ DORF

Signalbahn

Chantarella-bahn

Railway Station

Ice Sports Arena

Swimming Pool

SPA

Kempinski Hotel

Kulm Hotel

Carlton Hotel

Badrutt's Palace

Lej da San Murezzan

**Project Engiadina**  
St. Moritz-Bad Panorama



## Chesa Engiadina

### Facts St. Moritz

St. Moritz is a luxury alpine resort town in Switzerland's Engadin valley located 1800 meters above sea level.

St. Moritz unites profound natural beauty with urban elegance. It is home to a surprisingly extensive collection of fashion boutiques and Restaurants.

#### **Resident Population (Engadin Region):**

Sils: 700

Silvaplana: 985

St. Moritz: 5'100 + 2'500 seasonal

Celerina: 1'514

Pontresina: 2'005

Samedan: 2'945

Bever: 628

La Punt Chamues-ch: 748

Madulain: 220

Zuoz: 1'333

S-chanf: 735

Maloja: 328

Zernez: 1'121

#### **Total overnight stays**

Average overnight stays (hotel and non-hotel accommodation)

- 2.1 million (summer)
- 2.3 million (winter)

Total beds: around 12'000

5 star: 1'853

4 star: 2'847

3 star: 2'409

2 star: 913

Not rated (incl. guesthouses): 4'035

#### **Summer Visitors' nationalities:**

54% Switzerland

12% Germany

9% Italy

5% Japan

3% USA

2% UK

15% others

#### **Winter Visitors' nationalities:**

45% Switzerland

24% Germany

7% Italy

4% Russia

3% UK

2% France

2% USA

14% others

#### **Railway connections:**

Zurich HB to St. Moritz - 3 hours 21 minutes.

RhB from Tirano to St. Moritz - 2 hours 22 minutes

#### **Distance to main airports\* (by car):**

Zurich - St. Moritz: 200 km 3 h ca.

Milan - St. Moritz: 180 km 3 h ca.

Munich - St. Moritz: 280 km 4 h ca.

Basel - St. Moritz: 280 km 4 h ca.

\*Engadin valley is served by Samedan airport (5 km from St. Moritz), which host only private planes and aerotaxi services

# Project Engiadina

Local amenities & services

30 km/h area

Main road

Pedestrian path

Public Parking

Private Parking

Via Chavallera

Via Salet

Via Dal Bagn

Via Grevas

Via Ludains

Julierpass/Malojapass  
Zürich/Milano

Flüelerpass  
Innsbruck/Samedan Airport



Kantonal Bank

Pharmacy

Swisscom

Testa



Bakery

Restaurant

Hairdresser

Raiffeisen Bank

Hotel



BPS Bank

Hotel



Fahrni



Skiservice



Insurance



COOP



Doctor



Immoguide



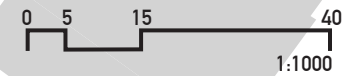
Laundry shop



Holiday homes



Denner





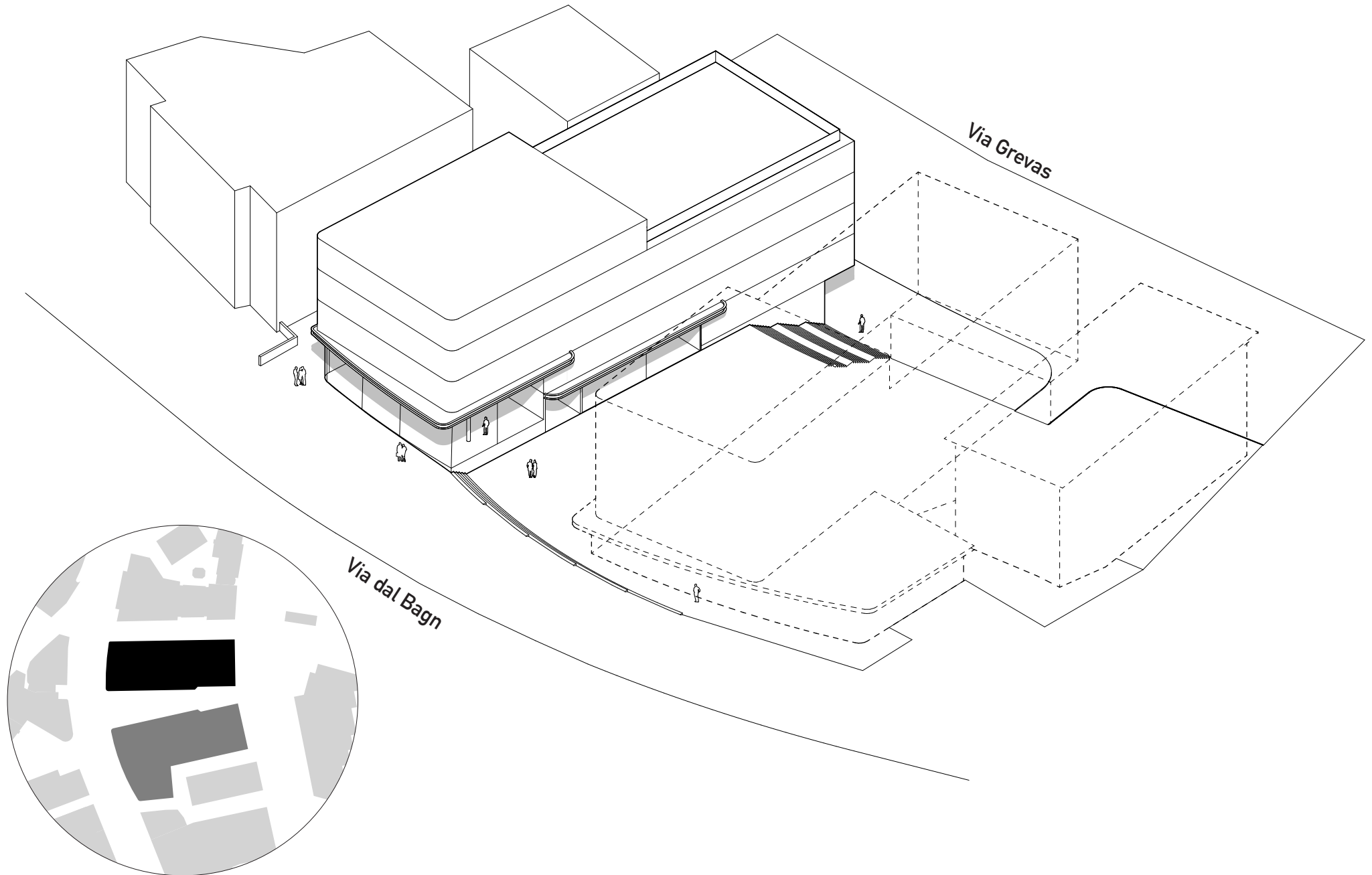




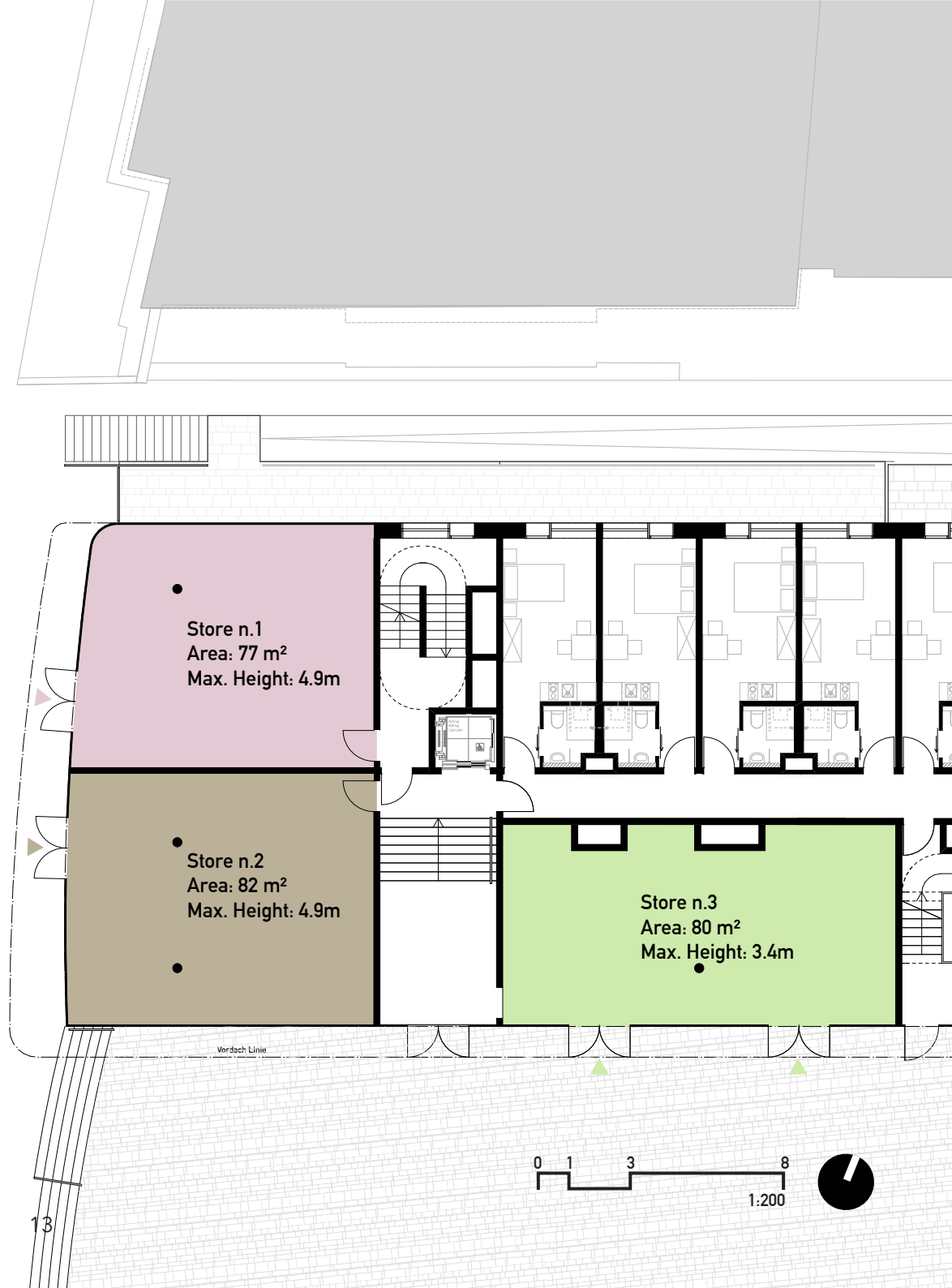
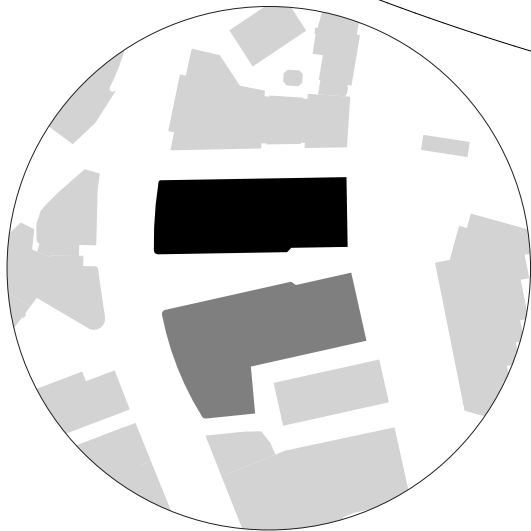
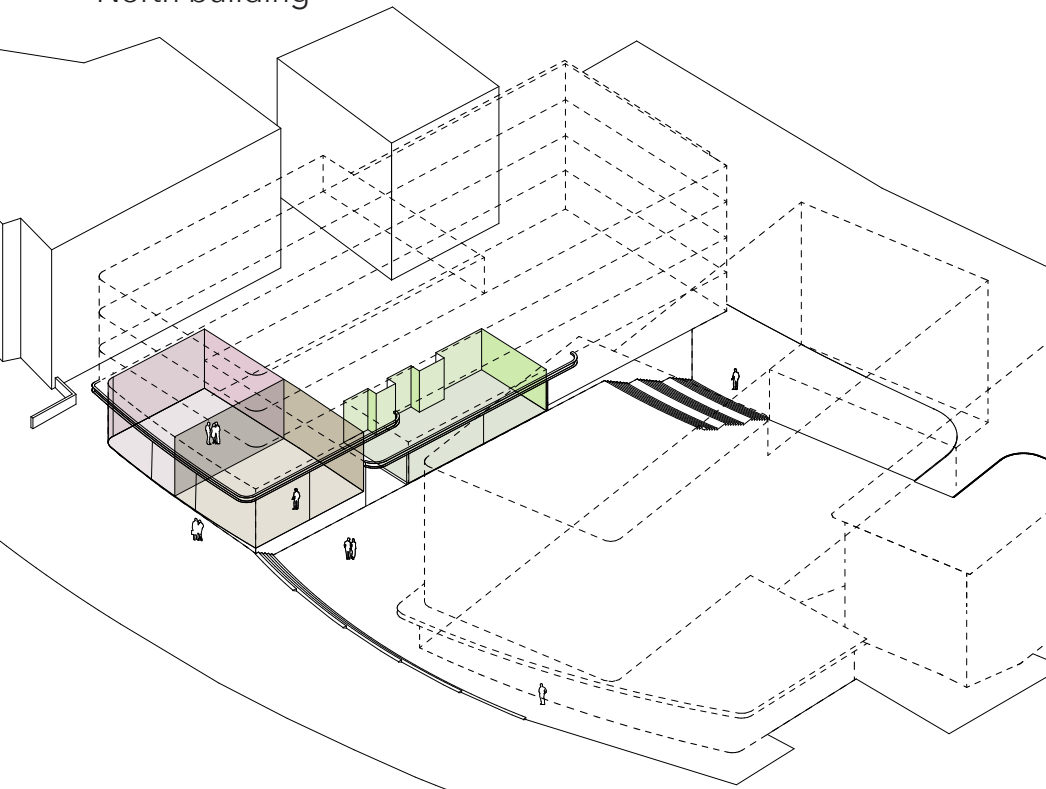


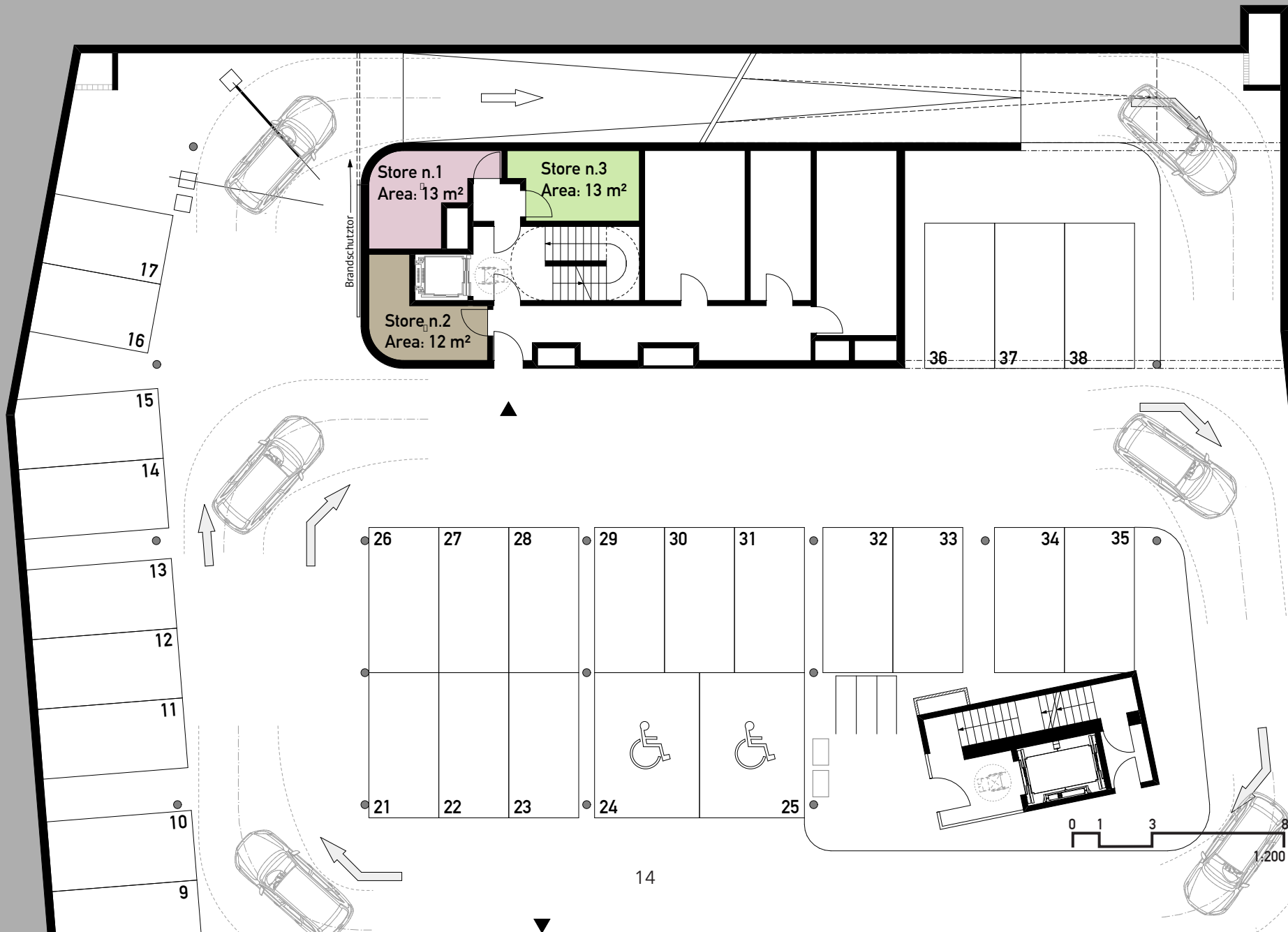


**Project Engiadina**  
North building

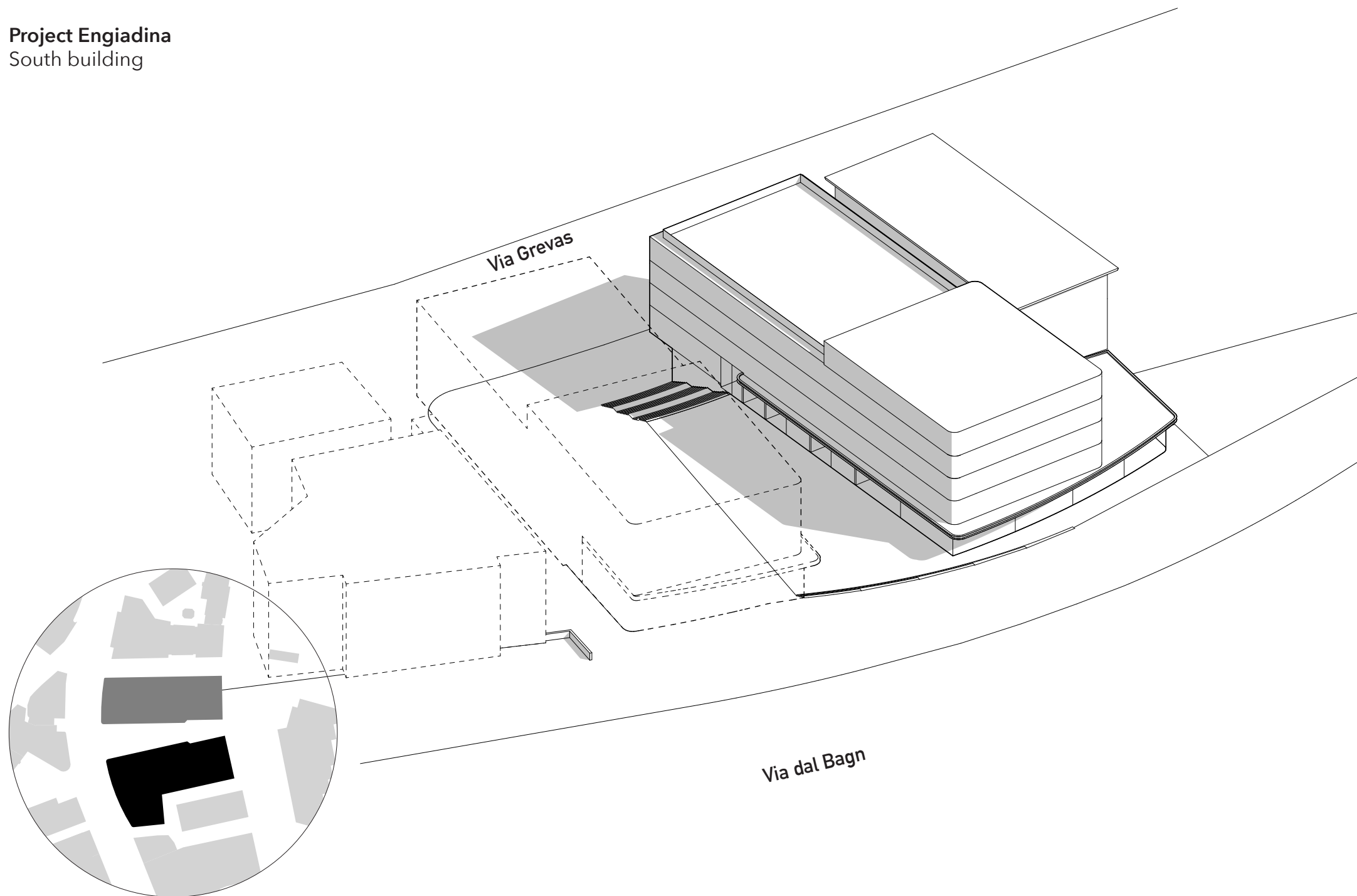


**Project Engiadina**  
North building

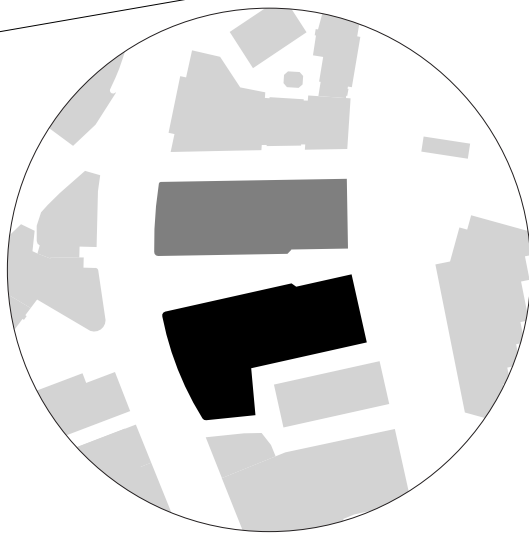
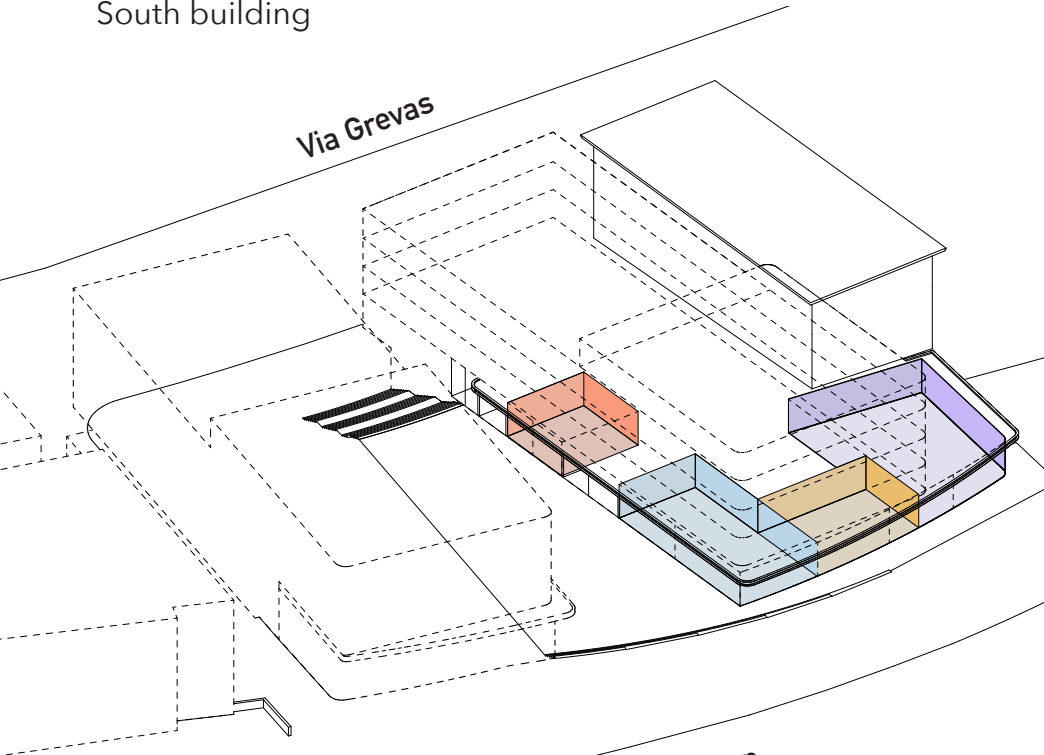




**Project Engiadina**  
South building



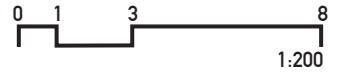
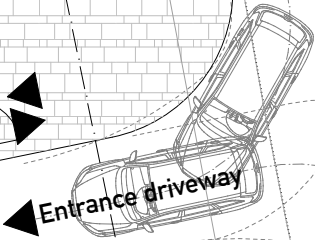
**Project Engiadina**  
South building





Project Engiadina  
South building

- Store n.3  
Area: 17.5 m<sup>2</sup>
- Store n.2  
Area: 17.5 m<sup>2</sup>
- Store n.1  
Area: 19 m<sup>2</sup>
- Store n.4  
Area: 9.5 m<sup>2</sup>



Chesa Engiadina  
Brands St. Moritz

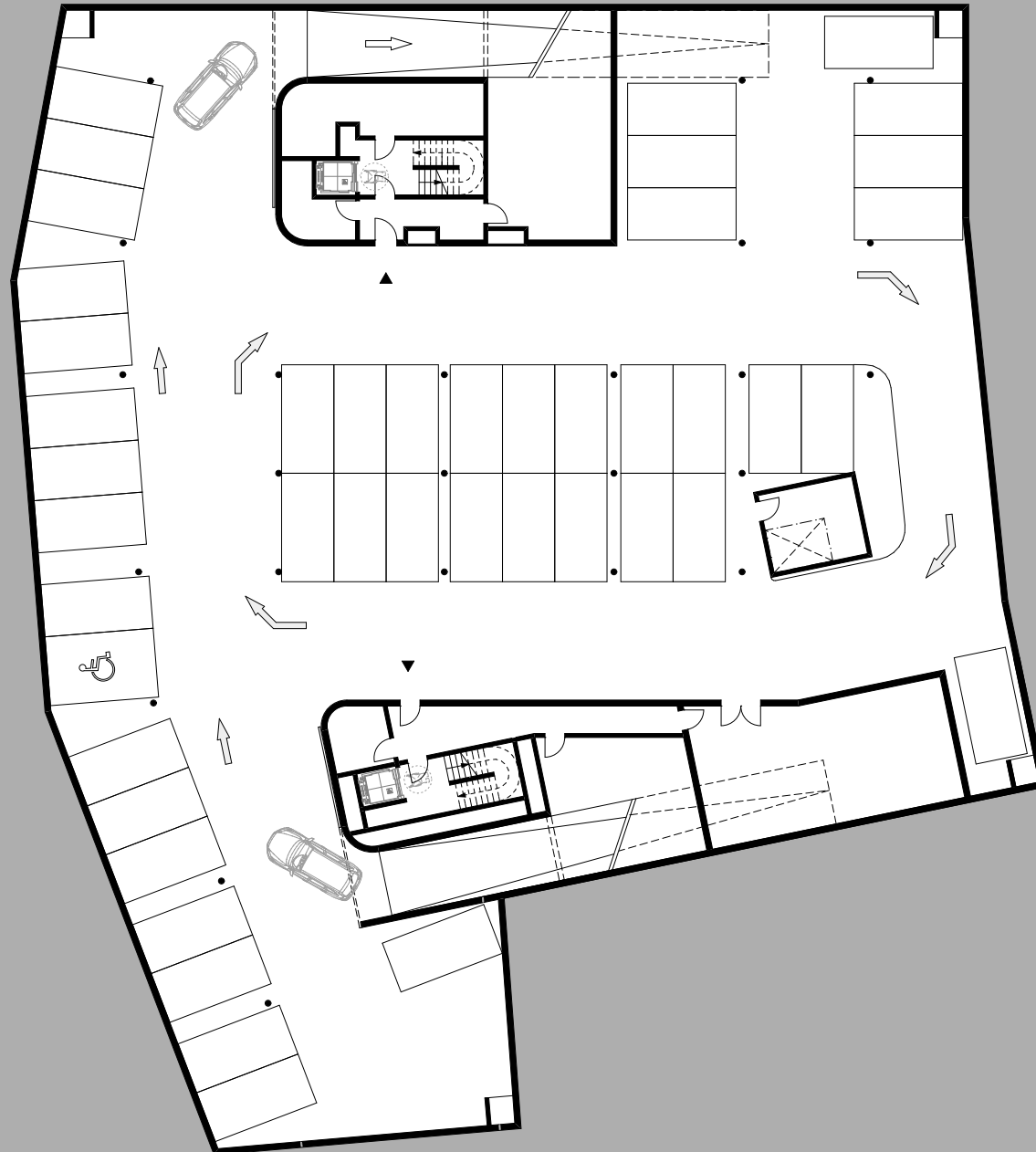


Chesa Engiadina  
Brands St. Moritz

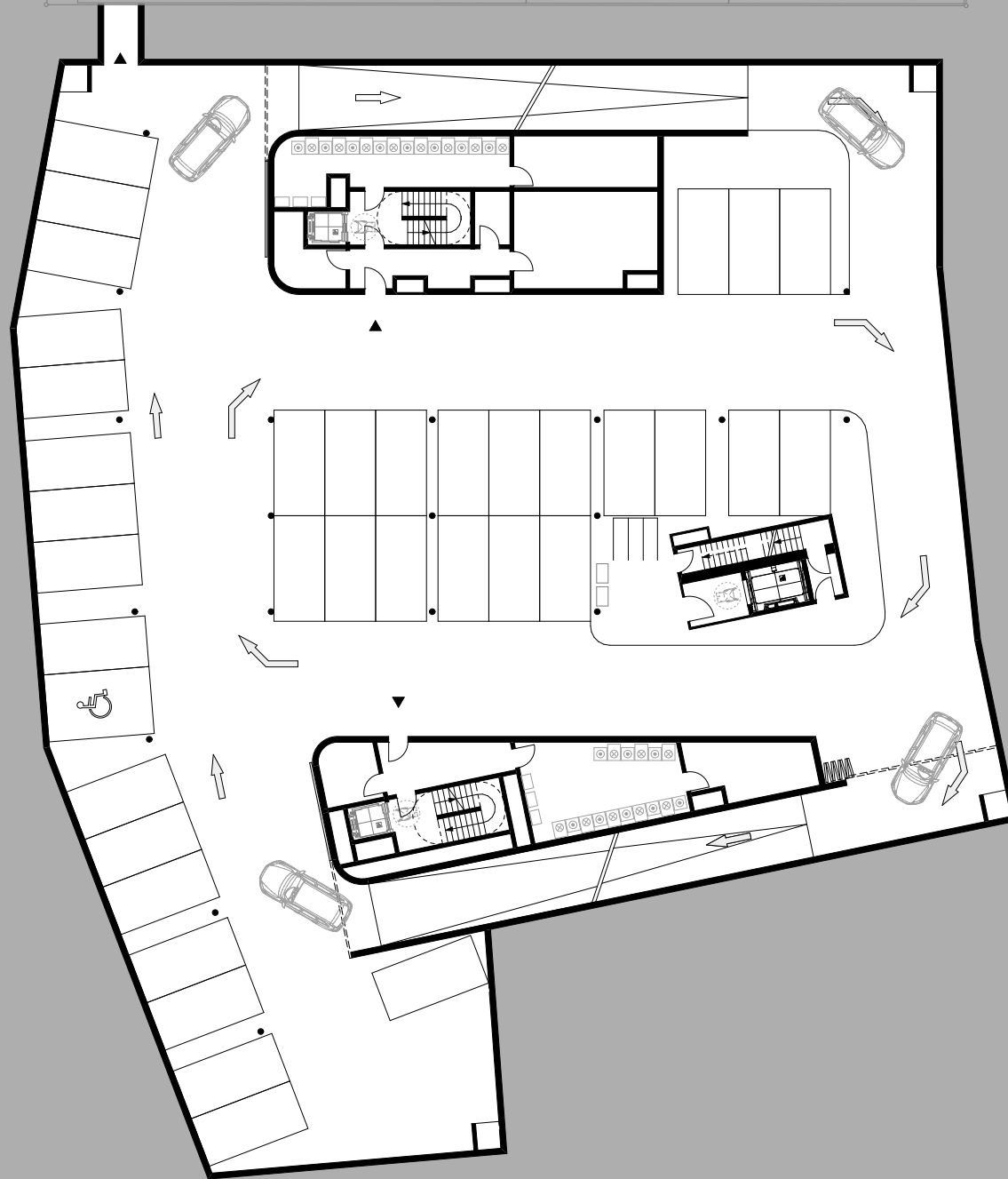


**Project Engiadina** Plans

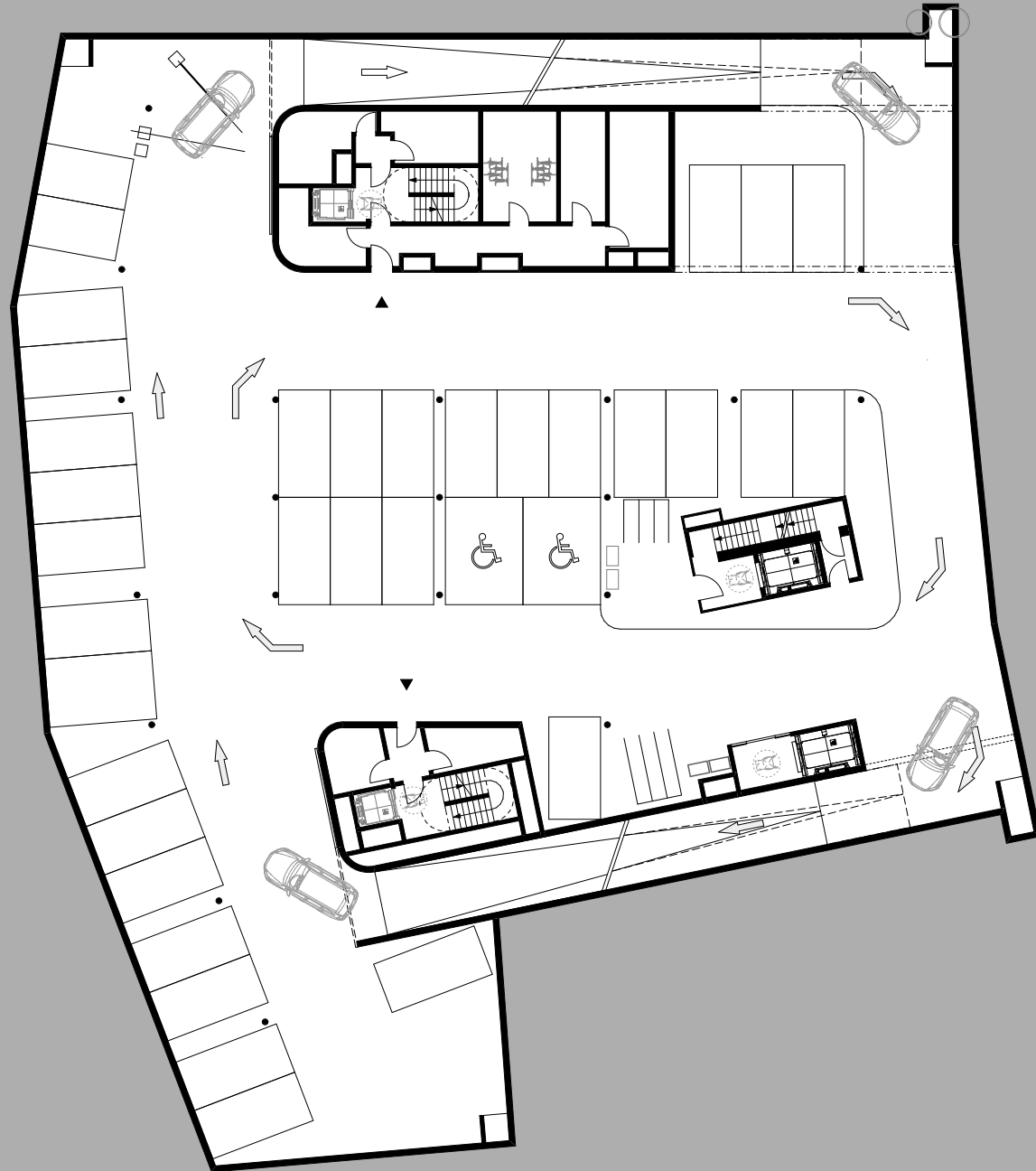
Project Engiadina  
Basement level 4



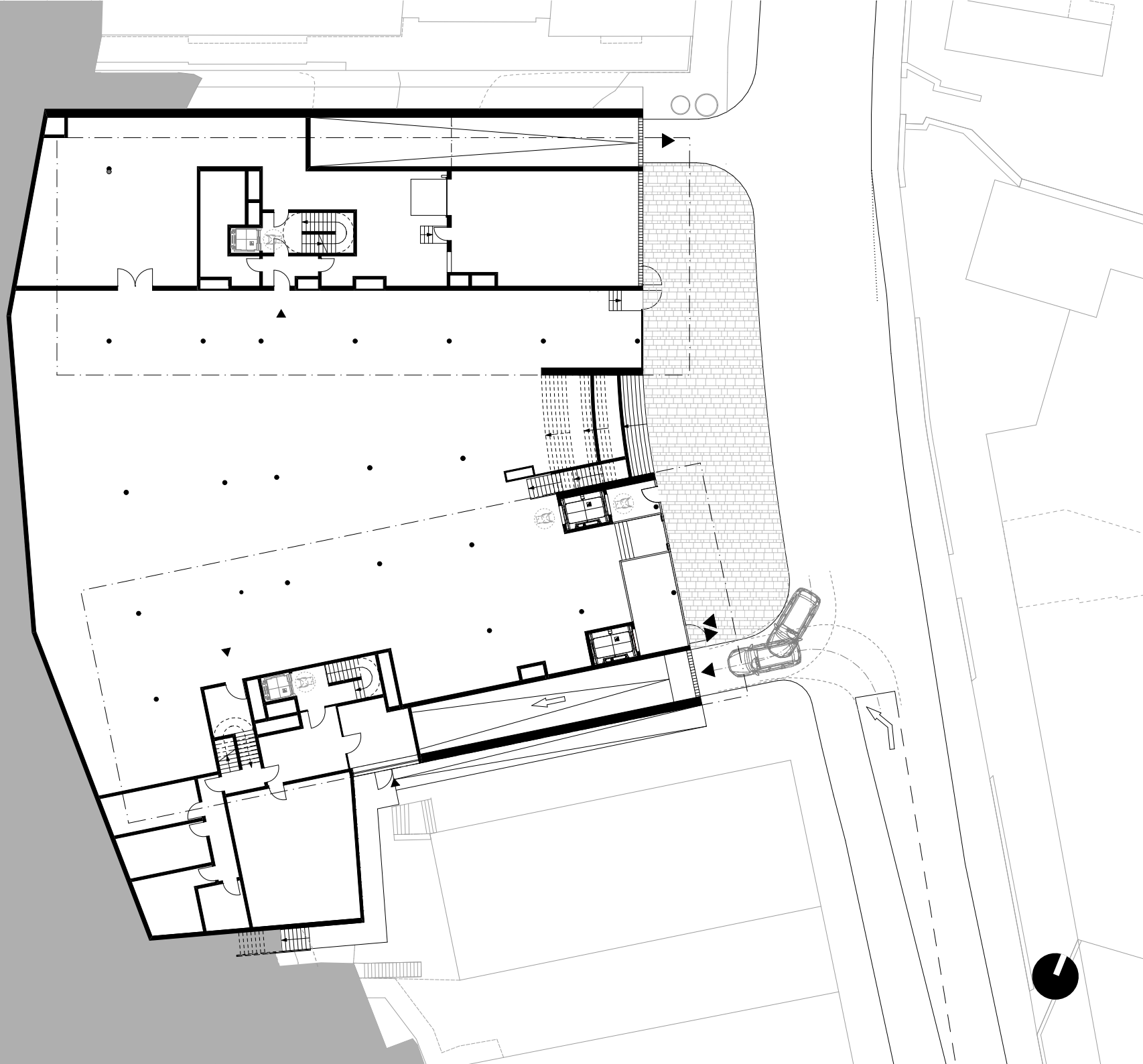
Project Engiadina  
Basement level 3



Project Engiadina  
Basement level 2

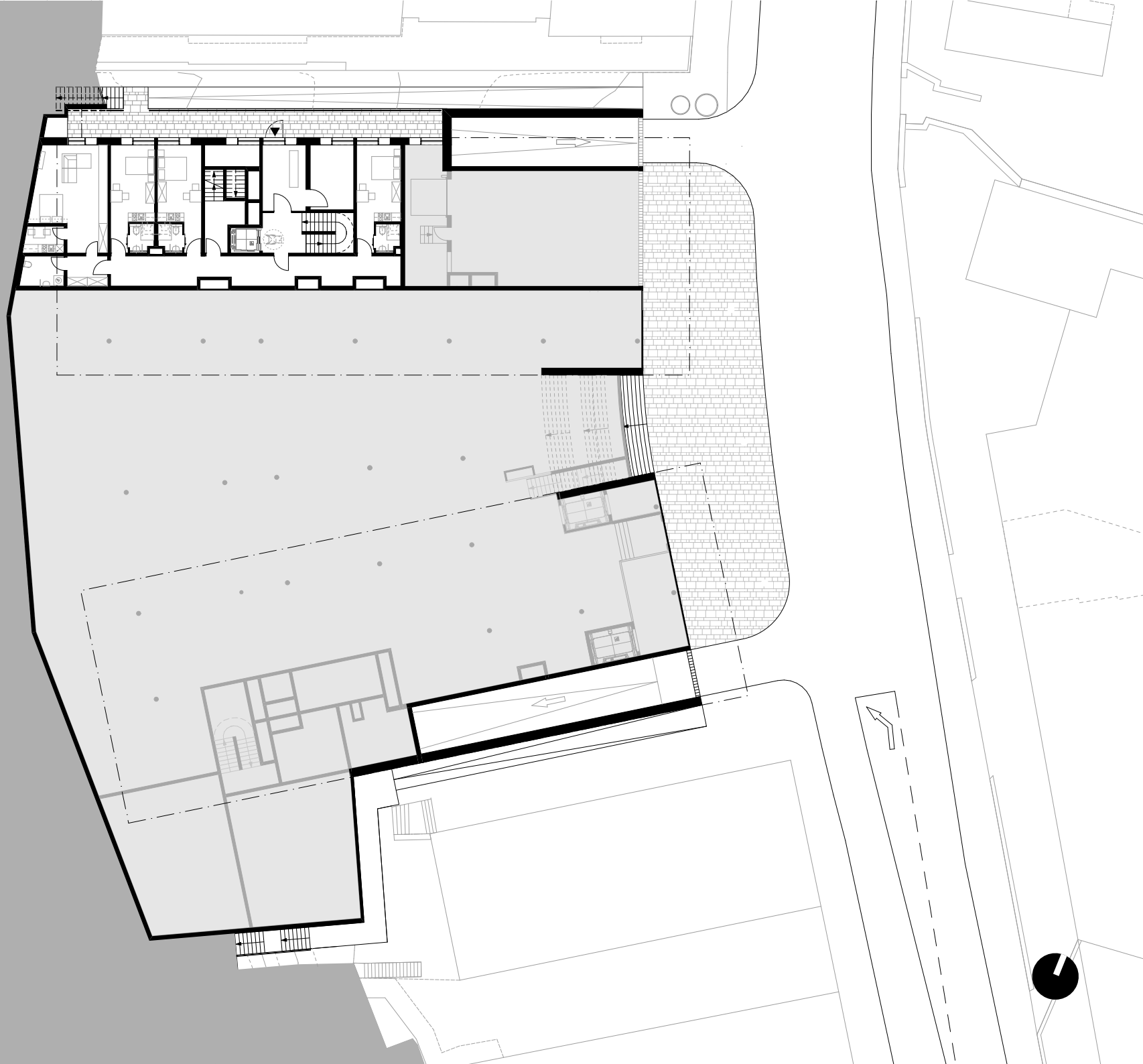


Project Engiadina  
Basement level 1





Project Engiadina  
Plan Mezzanine level



Project Engiadina  
Plan Ground floor

PROJEKT/REALPLAN/AG



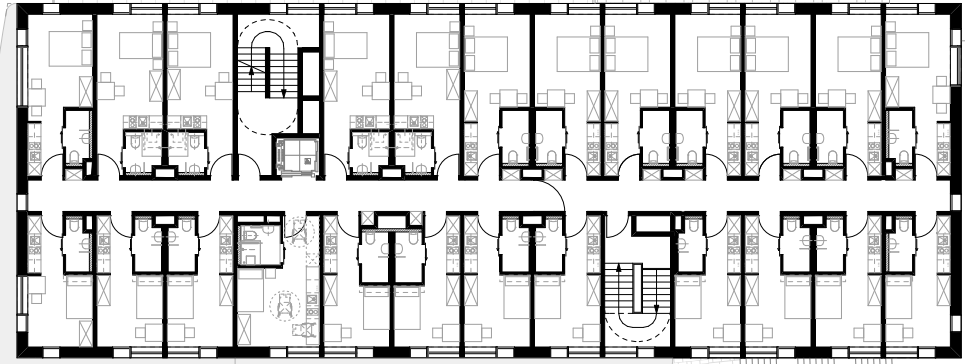
**Project Engiadina**  
Plan first floor



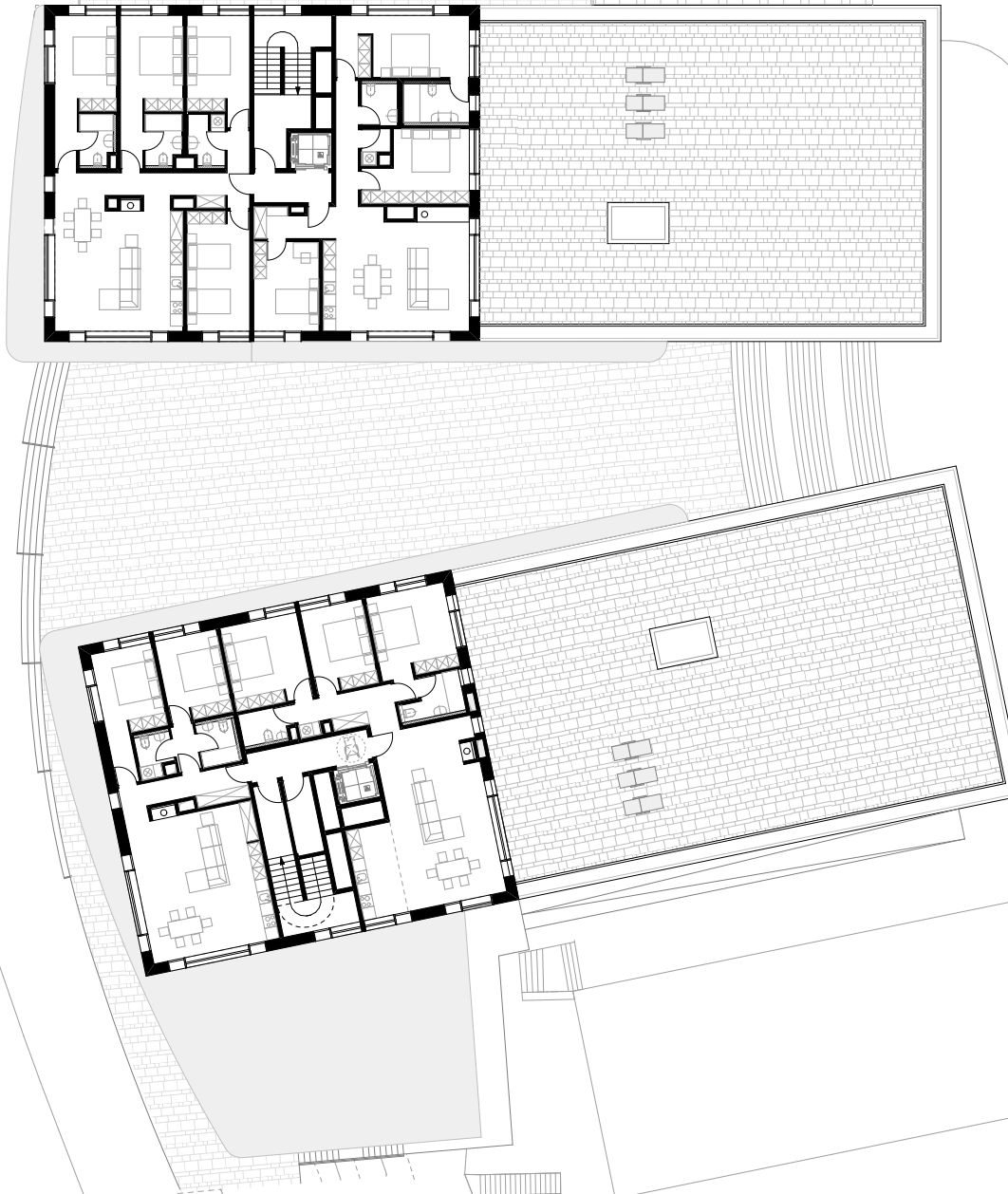
Project Engiadina  
Plan second floor



**Project Engiadina**  
Plan third floor



**Project Engiadina**  
Plan Attic



Project Engiadina  
Section

